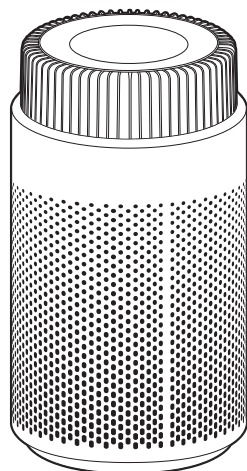


# coway AIRMEGA

## USER MANUAL

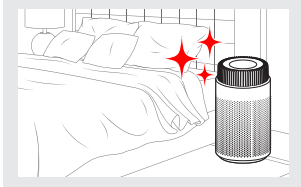
Air Purifier Airmega 100

EN/DE/FR/IT/ES/NL/SV/DA/NB/FI



coway

## KEY FEATURES



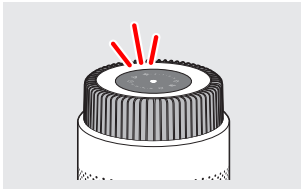
### Small, but powerful air purifier

Reduced size, enhanced air purification capacity for bedroom use. Sleep mode minimizes the airflow noise to avoid annoyance in bedroom settings.



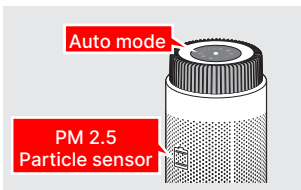
### Powerful 3-in-1 Filter

True HEPA H13 Filter efficiently filters various harmful sources and captures 99.97% of nano-sized particulate matter down to 0.03 micrometers.



### Light display

AQI Lighting: Intuitively indicates the air quality.  
Night light: Soothing night light for bedroom usage.



### Smart sensor and automatic mode

The PM 2.5 sensor accurately measures the level of ultra-fine dust. The AQI and auto mode adjusts the airflow speed (1, 2, and 3) for optimal operation depending on the indoor air quality.

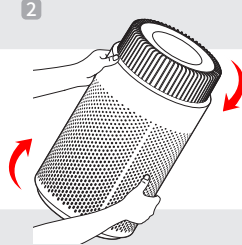
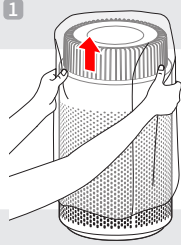


### Energy Star certified air purifier

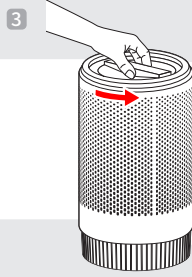
Eco Friendly air purifier with low energy consumption.

# QUICK START GUIDE

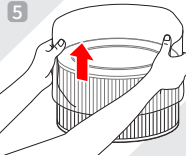
Do not operate the product until completing these steps first.



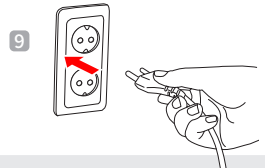
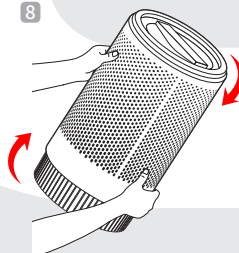
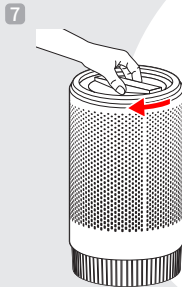
Turn it upside down.



Take out the filter.



Remove the plastic wrapping of the filter.



**CONTENTS**

<b>01 BEFORE USING THE PRODUCT</b>	<b>5</b>
SYMBOLS USED IN THIS MANUAL	5
SAFETY INSTRUCTIONS	6
<b>02 PREPARATION</b>	<b>11</b>
PARTS DIAGRAM	11
CONTROL PANEL	13
<b>03 MAINTENANCE</b>	<b>15</b>
PRODUCT CLEANING	15
FILTER REPLACEMENT INSTRUCTION	16
PARTICLE SENSOR CLEANING (CLEAN EVERY 2 MONTHS)	16
<b>04 APPENDIX</b>	<b>17</b>
SPECIFICATION	17
ENVIRONMENTAL PROTECTION	17
LIMITED WARRANTY	18

## **SYMBOLS USED IN THIS MANUAL**

The following symbols are used in this manual to explain procedures, restrictions, handling precautions, and instructions that should be observed for safety.

### **▲ WARNING**

Warning indicates a potentially hazardous situation that may result in death or severe injury to the user or others.

### **▲ CAUTION**

Caution indicates a potentially hazardous situation that may result in injury to the user or others, or the loss of property.

### **☑ NOTE**

Note indicates useful tips or additional information for procedures and product use.

### **[ ]**

This square bracket represents control buttons and indicators on the product.

### SAFETY INSTRUCTIONS

Read and follow all the safety tips and warnings before using the product.

#### **▲ WARNING**

- Do not exceed the voltage and power rating of the power outlet or connection device. This may generate excessive heat and cause electric shock or fire.
- Only use the appropriate type of electric socket for the product. Connecting the product to an incorrect socket may result in damage.
- Do not immerse the product or any of its parts in water. Operate the product only after a qualified technical examines and replaces the parts that were under water.
- Do not touch the power plug with wet hands.
- If the electric outlet is wet, do not connect the power plug of the product. Wait till the electric outlet dries completely before use.
- Do not operate the product if the motor fan fails to operate or is damaged.
- Disconnect the power plug from the electric outlet if strange sounds, smells, or smoke come from the product. Contact the customer service center immediately for instructions.
- Disconnect the power plug from the electric outlet when the product is not in use and before cleaning, inspecting, or replacing parts.
- Use a dedicated electric outlet for the product. Do not connect the product to a power strip that has connections to several other products.

- Do not operate the product if the power plug or cords are damaged.
- Do not forcibly bend, twist, pinch, or damage the power cord.
- Do not force the power plug into an incorrect electric outlet or into a loose electric outlet. Contact a qualified technician to install a proper electric outlet.
- If the supply cord is damaged, it must be replaced by the manufacturer, its service agent or similarly qualified persons in order to avoid a hazard.
- Remove the power plug from the electric outlet by grasping the power plug and pulling it gently. Never pull the cord to remove the power plug.

**READ AND SAVE THESE INSTRUCTIONS**

### SAFETY INSTRUCTIONS

Read and follow all the safety tips and warnings before using the product.

#### **▲ WARNING**

- Keep the electric cord away from heat sources.
- Do not repair the product unless this manual recommends it. Doing so will void your warranty. All repair work must be carried out by a qualified technician.
- Do not use this product in industrial areas or factories where oil, grease, or dust particles may be present. This product is for household use only.
- Do not change the filter while the product is operating. Always turn off the product and unplug the power plug before accessing the components inside the product.
- Do not place the product near a humidifier or in humid areas, such as bathrooms or laundry rooms, where the product may come into contact with water.
- Do not place the product near flammable gases, cigarettes, incense, and other combustible materials.
- Do not place the product on a bed or against soft objects, such as curtains.
- Do not clean the product using detergents, paint thinner, or other household solvents.
- Do not spray insecticides or other flammable materials near the product.



## ▲ CAUTION

- This product should not be used by children under 8 without supervision.
- This product should not be used by persons with reduced physical, sensory, or mental capabilities or lack of experience without supervision or instruction concerning to the use of the product in a safe way and understand the hazards involved.
- Children should be supervised to ensure that they do not play with the appliance.
- Do not use this product with any solid-state speed control device, as it may result in electric shock or fire.
- Do not use an adapter or extension cord, as it may cause fire, shock, or personal injury.
- Do not use attachments or filters not recommended by the manufacturer.
- Exercise caution while removing the components from the product. Ensure that your body parts do not get stuck or scratched while servicing the product.
- Do not insert any objects or finger into the openings of the product. If any objects fall into the openings, immediately turn off the product and unplug the power plug. Contact a qualified technician or the manufacturer to remove the object.
- Do not wash or reuse the Max2 filter.
- Do not block the air outlet of the product. Doing so may decrease the efficiency of the product and increase the risk of injury.
- This product is for household use as described in this manual. Using it in an industrial environment or any other place not recommended by the manufacturer and may result in electric shock, fire, and injury to person.

## 01 BEFORE USING THE PRODUCT

- Do not place anything on top of the product.
- Do not run the power cord under carpets or cover it with rugs.
- Change the filters at the recommended intervals so that excess dust does not accumulate.
- Do not place the product where the both sides of product are blocked.
- Do not place the product in direct sunlight.
- Do not place the product next to or on windows.
- Place the product on a firm, flat, and dry surface that provides sufficient air circulation.
- Keep the product and its cord out of way, where it cannot be stepped on or tripped over.
- Operation is subject to the following two conditions: (1) this device may not cause harmful interference and (2) this device must accept any interference received, including interference that may cause undesired operation.
- Cleaning and user maintenance shall not be made by children without supervision.

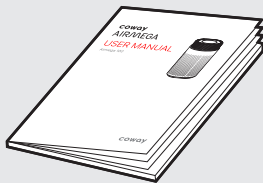
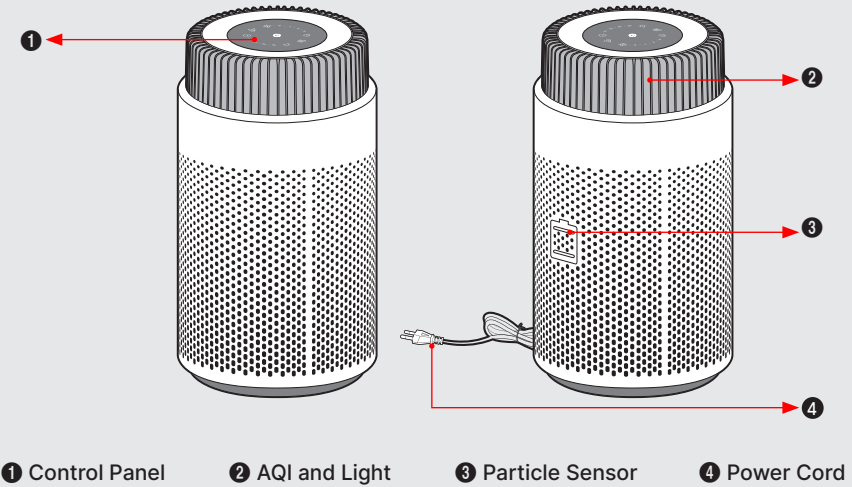
**READ AND SAVE THESE INSTRUCTION**

PARTS DIAGRAM

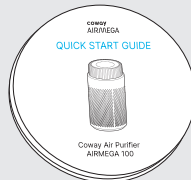
Exterior

EN

Front / Back

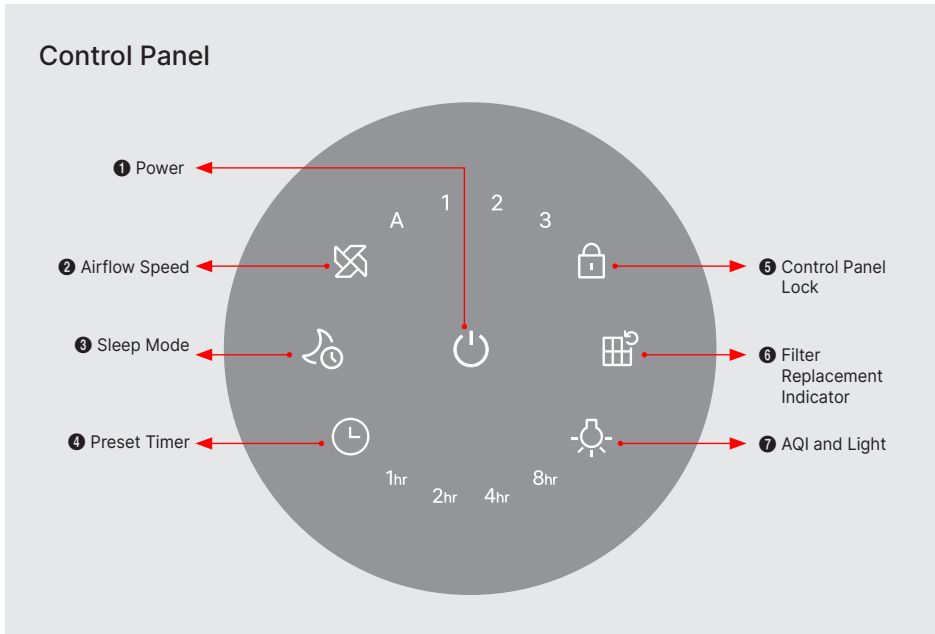


Manual



Quick Start Guide

PARTS DIAGRAM



# CONTROL PANEL




## 1 Power

Press the  button to turn the product on and off.




## 2 Airflow Speed

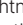



Press the  button to switch the mode.  
"A" (auto), "1"(low), "2"(Med),"3"(high)




## 3 Sleep Mode

If the product is set to sleep mode, it reduces noise and power consumption.  
Press the  button while power is on to enter the Sleep mode.

In the Sleep Mode, the fan speed is reduced for low noise operation in order not to interrupt the user's sound sleep.

Also, brightness of the  button and  button (if timer is operating, the  button and  button) on the display panel is restricted to 50 %.

If you press the  button once again, it returns to the previous air speed.



## 4 Preset Timer

Touch the  timer button until the indicator light displays the desired time.

When pressing the button, it is set in the order of 1hr → 2hr → 4hr → 8hr → OFF, and the set time is displayed on the display panel.


### USE OF EACH FUNCTION BUTTON



#### 5 Control Panel Lock

Press and hold the button for 3 seconds to lock and unlock when power is turned on.



When pressing another button while the product is locked, the button indicator blinks three times with a beep sound and the button does not operate.

When pressing and holding the  button again for 3 seconds in the Lock mode, the Lock mode is deactivated and the button turns off.

If the power cord is plugged in after removed, or if the power of the product is turned on after off by the timer, lock is deactivated automatically.



#### 6 Filter Replacement Indicator

 will pop up on the display panel when its time to replace the filter. After replacing the filter, press and hold the  for 3 seconds to reset the filter replacement indicator.



#### 7 AQI and Light

Press the  button to switch between AQI and night light or to turn off the light.

According to the air quality, the color of AQI light changes.

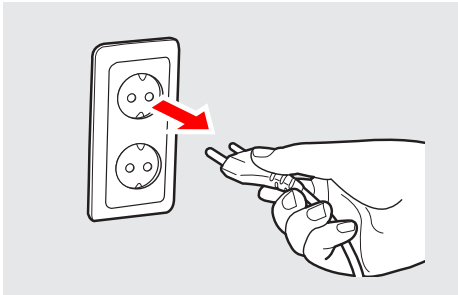
- **Blue: Good, Green: Moderate, Orange: Unhealthy, Purple: Very Unhealthy**

In the default operation status, the button and AQI indicator are displayed in maximum brightness on the display panel.

When pressing the button, AQI indicator, Night Light and off functions are alternately performed.

AQI mode → Night light → All off → AQI mode

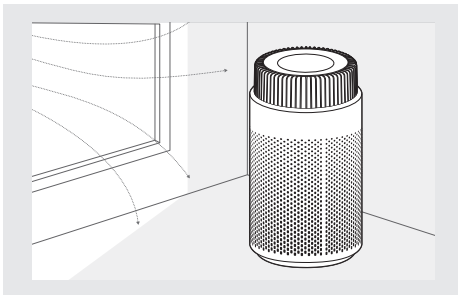
## PRODUCT CLEANING



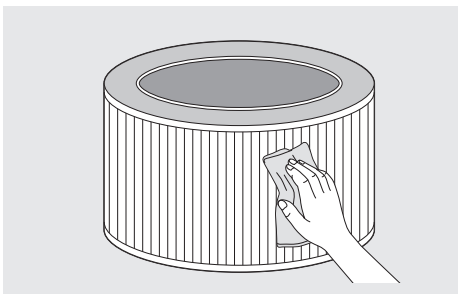
- 1** Before cleaning the product, please be sure to turn off the power and unplug the machine.



- 2** Use a dry cloth to clean the product. Do not use detergents that contain solvents, thinners, bleach, chlorine, or abrasives.

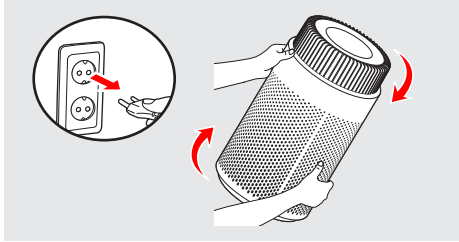


- 3** Place the product in a well-ventilated shade.

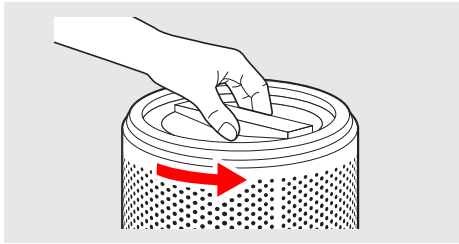


- 4** Gently brush off the collected dust on the surface of the prefilter with dry cloth, or vacuum cleaner for optimal performance.

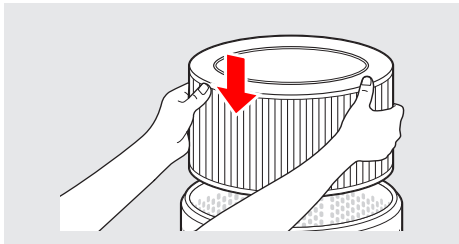
## FILTER REPLACEMENT INSTRUCTION



- 1 Unplug the product and turn the product upside down to replace the filter.

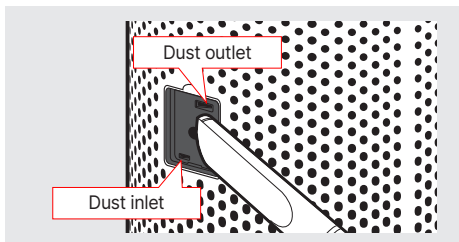


- 2 Grab the handle and turn clockwise to close and turn counter clockwise to open the rear cover.



- 3 Please take the used filter out and replace with a new filter.

## PARTICLE SENSOR CLEANING (CLEAN EVERY 2 MONTHS)



If there are dusts or foreign objects in the particle sensor, the dust density may be detected high, so clean periodically to remove the dust.

\* If not cleaned periodically, the particle sensor performance will be degraded.

\* The cleaning cycle may differ depending on the environment. Clean more often in very dusty environments.

\* Do not let dusts drop into the air vent hole when you clean it.

1. Use a vacuum cleaner or soft brush to clean the dust outlet and dust inlet.

\* Use the lowest power of the vacuum cleaner to clean.

2. Clean the dust outlet and dust inlet with wet cotton swab, then wipe it off with dry cotton swab to remove moisture from it.



## SPECIFICATION

The specification is subject to minor changes to improve the product performance.

Product type	Air Purifier
Model Name	Airmega 100
Filter	3 in 1 Filter (Pre-Filter + True HEPA Filter + Deodorization Filter)
Airflow	4 Stages (Auto - 1 - 2 - 3)
Timer	On/Off Timer up to 8 hours
Voltage / Frequency	220 V - 240 V~ 50-60 Hz
Power Consumption	25 W
Dimension (W x H x D)	Filter: $\phi 19.3 \times 14.8$ cm Product: $22 \times 22 \times 39.5$ cm
Product Weight	Product weight: 3.0 kg Gross weight: 4.0 kg

- ▶ Product design and specification may change without any prior notice for application of statutes, product improvement, and quality enhancement.

## ENVIRONMENTAL PROTECTION



To prevent possible harm to the environment or human health from uncontrolled waste disposal, recycle it responsibly to promote the sustainable reuse of material resources. To return your used device, please use the return and collection systems or contact the retailer where the product was purchased. They can take this product for environmental safe recycling.

**WARRANTY CARD OR WARRANTY LETTER  
TWO YEAR LIMITED WARRANTY  
AIR PURIFIER AIRMEGA 100("PRODUCT")**

**Model:****Serial Number:****Customer Name:**

("OWNER")

**Date of Purchase:****What This Warranty Covers:**

Commencing with the date of purchase of the Product and continuing for a period of Two years, if manufacturing defects in the Product cause the Product to not operate properly for its intended use, then subject to the exclusions, conditions, and limitations contained herein, COWAY at its sole option will repair or replace the Product.

Decisions as to the extent of repair or replacement required will be made solely by COWAY.

The remedy under this Warranty is available only for that portion of the Product exhibiting defects at the time of the warranty claim. The replacement Product as well as any remaining original Product will be warranted only for the original two years warranty period. This limited warranty applies only to Product used for an application specified by COWAY for the Product and applied in strict accordance with COWAY published specifications in effect at the time of application. IF PRODUCT IS USED FOR OTHER THAN ITS INTENDED PURPOSE, IT IS SOLD AS IS AND WITHOUT ANY EXPRESS OR IMPLIED WARRANTIES, INCLUDING OF MERCHANTABILITY OR FITNESS FOR A PARTICULAR PURPOSE.

**What This Warranty Does Not Cover:**

This Warranty warrants that the Product will be free from manufacturing defects which affect the ability of the Product to operate for its intended use; it is not a warranty that the Product will never require repairs or to undertake responsibilities, liabilities or obligations other than those specifically identified in the preceding section. COWAY is not responsible or liable for personal injury or property damage of any kind, even if arising from a breach of this Warranty.

**Limitations and Exclusions:**

TO THE EXTENT PERMITTED BY APPLICABLE LAW, COWAY DISCLAIMS ANY OTHER WARRANTY EXPRESS OR IMPLIED, THAN THAT PROVIDED FOR HEREIN. THIS WARRANTY IS IN LIEU OF AND EXCLUDES ALL OTHER WARRANTIES, GUARANTEES, CONDITIONS AND REPRESENTATIONS, EXPRESS

OR IMPLIED, ORAL OR WRITTEN, STATUTORY OR OTHERWISE, INCLUDING BUT NOT LIMITED TO ANY IMPLIED CONDITIONS OR WARRANTIES AS TO THE MERCHANTABILITY OR FITNESS FOR A PARTICULAR PURPOSE OF THE COWAY PRODUCT.

SOME STATES DO NOT ALLOW LIMITATIONS ON HOW LONG AN IMPLIED WARRANTY LASTS, SO THE ABOVE LIMITATION MAY NOT APPLY TO YOU.

COWAY DOES NOT AUTHORIZE ANY PERSON INCLUDING ITS REPRESENTATIVES, TO MAKE ANY REPRESENTATION OR TO OFFER ANY WARRANTY, CONDITION OR GUARANTY IN RESPECT OF THE PRODUCT OTHER THAN THIS WARRANTY. THIS LIMITED WARRANTY SHALL BE THE OWNER'S SOLE AND EXCLUSIVE REMEDY AGAINST COWAY AND COWAY SHALL NOT BE LIABLE FOR ANY CONSEQUENTIAL, EXEMPLARY, SPECIAL, INCIDENTAL OR OTHER DAMAGES INCLUDING, BUT NOT LIMITED TO, LOSS OF PROFITS, AND LOSS OF USE. INCIDENTAL, CONSEQUENTIAL AND EXEMPLARY DAMAGES SHALL NOT BE RECOVERABLE EVEN IF THE REMEDIES OR THE ACTIONS PROVIDED FOR IN THIS WARRANTY FAIL OF THEIR ESSENTIAL PURPOSE. SOME STATES DO NOT ALLOW THE EXCLUSION OR LIMITATION OF INCIDENTAL OR CONSEQUENTIAL DAMAGES, SO THE ABOVE LIMITATION OR EXCLUSION MAY NOT APPLY TO YOU. COWAY SHALL NOT BE LIABLE FOR ANY DAMAGES WHICH ARE BASED UPON NEGLIGENCE, BREACH OF WARRANTY, STRICT LIABILITY OR ANY OTHER LEGAL THEORY OF LIABILITY OTHER THAN THE EXCLUSIVE LIABILITY SET FORTH IN THIS WARRANTY.

**Limitations on Implied Warranties:**

Any implied warranty of merchantability or fitness for a particular purpose or use, shall be limited to the duration of the foregoing express written warranty.

**Conditions of Warranty:**

COWAY's continuing liability under this Warranty is conditioned upon the following:

- a) The defect or damage is not caused by or is the result of: abnormal use or conditions; improper storage, unauthorized modifications or repair; misuse, neglect, accident, alteration, improper installation or other acts that are not the fault of Coway or the manufacturer of the product or that are not covered by the manufacturer's warranty;
- b) The Product has not been altered, modified or repaired without prior written approval of COWAY;
- c) The OWNER has notified COWAY in writing of any failure of the Product covered by this Warranty within thirty (30) days following such failure;
- d) There has been no misuse, abuse or negligence with respect to the Product on the part of the OWNER.

**Waiver:**

COWAY's failure at any time to enforce or rely upon any of the terms or conditions stated herein shall not be construed to be a waiver of its rights hereunder.

**Obtaining Warranty Service and OWNER'S Duties:**

If the Product fails to operate for its intended purpose, then notify COWAY or its Representative Agency, within 48 hours or within the next business day after discovery of any defect in the Product. The OWNER must give written notice to COWAY no later than thirty (30) days after a defect is discovered or should by reasonable diligence have been discovered. Claims under this Warranty will require proof of purchase by the OWNER.

**COWAY**

Add : Coway Co., Ltd. 136-23, Yugumagoksa-ro,  
Yugu-eup, Gongju-si, Chungcheongnam-do,  
Korea  
Tel. : +82-1588-5200

**COWAY EU**

Add : Stroombaan 4 1181 VX,  
Amstelveen The Netherlands  
Mail : support@eu.coway.com  
Web : en.coway.com / de.coway.com  
nl.coway.com / fr.coway.com

**SWEDEN**

Add : Albion Nordic AB Traktorgatan 2 745 37  
Enköping Sweden  
Tel. : +46 171 66 33 00  
Mail : info@albionnordic.com  
Web : www.albionnordic.com